

# ELLEDECOR

## JET-SET *Style*

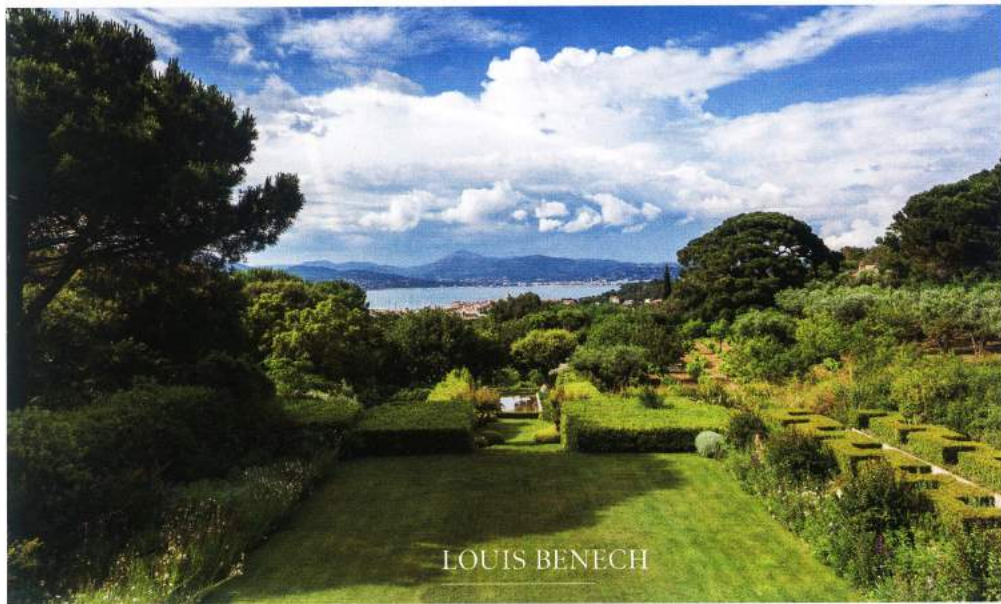
**EXTRAORDINARY HOMES IN  
PARIS, ROME, MARRAKECH, AND BEYOND**

**THE ALLURE  
OF THE  
LOIRE VALLEY**



SEPTEMBER 2013  
USA \$5.99  
ELLEDECOR.COM

# Global Chic!



LOUIS BENECH

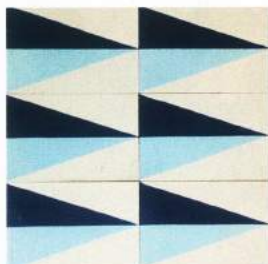


The landscape architect behind the gardens at a Loire Valley château (see page 128) has taken on projects around the world, from Chicago to Egypt to New Zealand. But the core of his work lies in his native France. A sampling of his lush creations can be seen in *Louis Benech: Twelve*

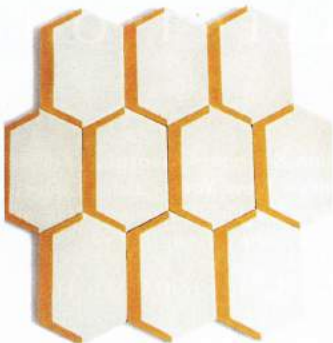
*French Gardens*, to be published next month by Papier and Co. One highlight is his design for a property in St. Tropez, above. “All my gardens are unique,” Benech says, “so I feel like a chameleon. But I hope to create peaceful places that make the people living in them happy.”

POPHAM DESIGN

“Travel is definitely a catalyst for new designs,” says Caitlin Dowe-Sandes of the cement tiles she creates with her husband, Samuel. Their antiques-filled bungalow, featured on page 122



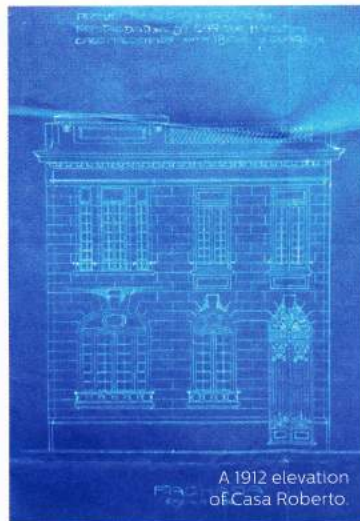
of this issue, is located in the Gueliz neighborhood of Marrakech; their studio, Popham Design, below left, is just a few minutes away. “It’s so easy for us to reach Europe, even for a long weekend,” she adds. Their newest tiles were inspired by an exhibition of Op art the couple saw in Berlin and a vintage Goan fabric. Other recent patterns, including Headlight, left, and Long Shadow, below, are a graphic twist on classic Moroccan style.



ROBERTO BEGNINI

Despite his two Italian residences—including his apartment in Rome’s historic Palazzo Doria Pamphilj, featured on page 136—Roberto Begnini isn’t tied to his native country. Recently he’s been spending time in Montevideo, the capital of Uruguay, where he’s restoring an

early-20th-century house, which he is turning into a small hotel. Casa Roberto ([casaroberto.uy](http://casaroberto.uy)) is scheduled to open its doors in November, with four rooms in the *wunderkammer* style of his Roman residence. The building will also house an interior design studio and a gallery that sells vintage and contemporary furnishings from around the world.



A 1912 elevation of Casa Roberto.



SIMON UPTON

London resident Simon Upton has been photographing interiors for ELLE DECOR for more than 10 years—he estimates that he must have shot nearly 100 stories. Two are in this

issue, including the Paris apartment on page 114. “Doing shoots in Paris, there’s the added delight of seeing what’s behind the windows and balconies, what is hidden in courtyards and behind walls,” he says. When he’s not on assignment for us or such British publications as *World of Interiors* and *House & Garden*, he works on his own art photography, which can be seen at [simonupton.com](http://simonupton.com). “I love to shoot landscapes on an 8” x 10” camera, partly as a good excuse to get outside,” he says. “I also do still lifes of flora and fauna, which I am slowly making into a body of work.” His shot of a peregrine, left, is part of a series on falconry, soon to be featured in a book and an exhibition.



TOP LEFT: © ERIC SANDER (2); TOP RIGHT PORTRAIT: GIANNI FRANCHELLUCCI; BOTTOM RIGHT PORTRAIT: ISABEL PARRA; BOTTOM LEFT: COURTESY OF POPHAM DESIGN (3)